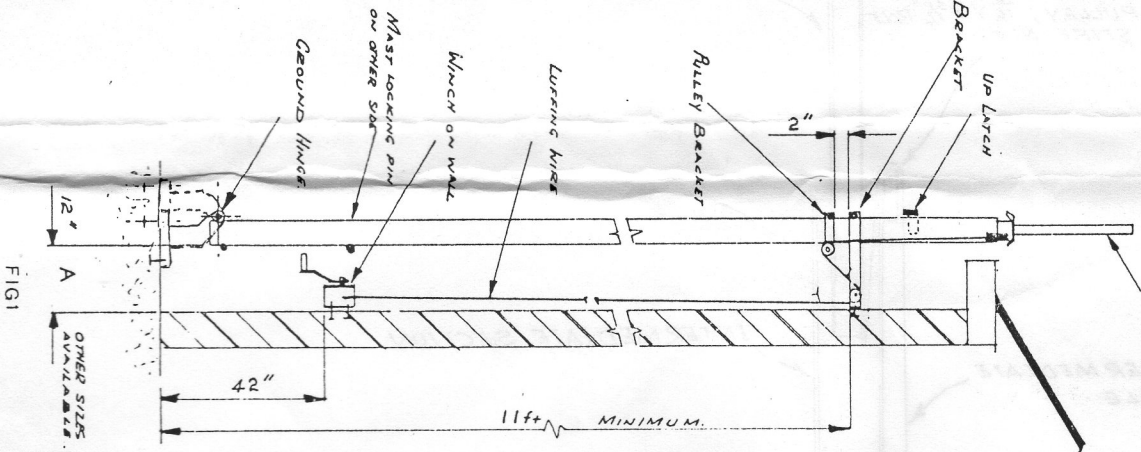


Before carrying out any work, read the instructions carefully. IF IN DOUBT-ASK.

1. Select the place you want to mount the mast making sure there is ample room for it to lower down.
2. Using a plumb line, mark a chalk line vertically down the wall as a centre line, extend onto the concrete base for the G.H.
3. Using a spirit level, mark a line where the Wall Bracket W.B. is to go. Refer to the diagrams and keep as near to the dimensions given. Position the W.B. so as to miss the up latch assembly.
4. Using the W.B. as a template, spot the fixing holes to the wall and drill for  $\frac{3}{8}$ " rawl bolts. Fix in position, note the pulley position. Drop a plumb line down from the W.B. pulley, mark off the position of the winch bracket and attach with  $\frac{1}{4}$  x  $\frac{3}{8}$ " rawl bolts. Bolt the winch on as shown with the drum down i.e. the pull on the cable must be against the ratchet stop.
6. Lay the mast down at right angles to the wall in line with the chalk marks. (The mast sections are preassembled less the rotator etc.).
7. Attach the Ground Hinge G.H. to the lower hinge point, insert the hinge pin and fix with the split pins. Note the way the lugs go - Fig. 2
8. Attach the pulley bracket to the mast with the pulley on the same side as the top pulley. Adjust its position up the mast to suit the W.B., see Fig. 1.
9. Roughly position the G.H. and mast along the line drawn earlier. The hinge pin centre to be  $15\frac{1}{2}$ " from the wall (i.e.  $3\frac{3}{8}$ " + Dim. A - the standard W.B. A is 12").
10. Insert the luffing cable over pulley A, under B and over C on the W.B., then down to the winch.
11. Loop two turns round the drum and anchor. (See inset).



REDUCEE TUBE RTT

L.M.D. / 211.50

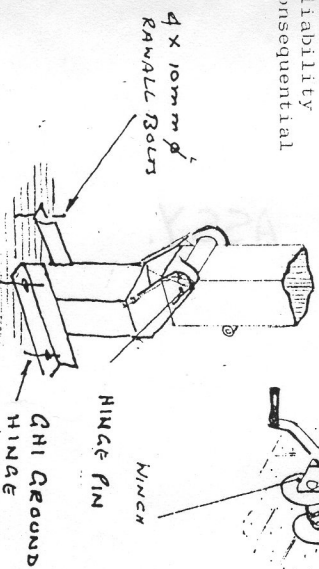
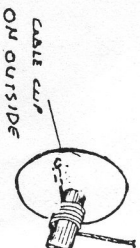
12. Fully close the mast sections and insert the locking pin. This pin must be in for tilting or raising the mast, remove for extending.
13. Take up the slack on the winch and slowly raise the mast up until it is in the W.B. Hold in position with a little tension on the cable. DO NOT over tension.
14. Using a spirit level, plumb the mast until it is vertical, carefully move the G.H. to adjust. When the mast is vertical, mark off the base to take the G.H. bolts.
15. Slowly lower the mast down. DO NOT STAND IN LINE WITH THE MAST WHEN RAISING OR LOWERING.
16. Drill the base for  $\frac{1}{4}$  x  $\frac{3}{8}$ " rawl bolts and anchor the G.H.
17. Fit the relevant head unit etc. with the end of the mast supported on a pair of steps or similar support.
18. When ready, winch up the mast until it is fully into the W.B., fix with locking bolt.

To Extend.

Remove lock pin and wind up with the winch until the up latch drops in. Release the tension on the cable. Take up the tension on the winch, pull on lanyard to release the up latch and lower mast.

Note. There is an up stop bolt fitted at the top of the square section, make sure it is in position before installation. DO NOT FORCE WINCH AGAINST THIS STOP. DO NOT remove the ratchet travel stop screw on the winch. Lubricate all moving parts regularly.

All diagrams etc. are for guidance only, the Company accepts no liability for the installation or any consequential claims.



Guy, rawl bolts etc. extra.

FIG 2